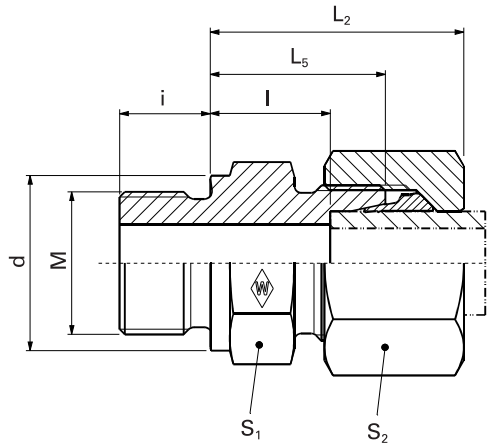


Straight male fittings

P-GEV ... M

P-GEV ... M-1.4571

- Metric stud type B to DIN EN ISO 9974-3



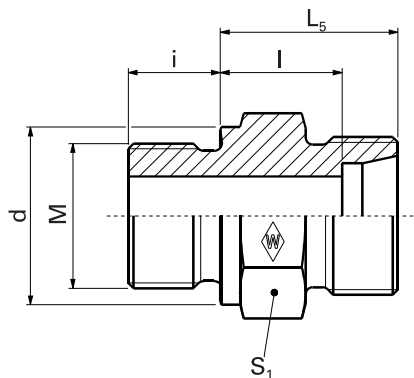
													WALPRO P-GEV ...	WALPRO stainless steel P-GEV ...- 1.4571*
Series	PN bar (psi)	Tube outer diameter	Model	kg/ 100 pc.	M	L ₂	L ₅	I	i	d	S ₁	S ₂	Art. no.	Art. no.
LL	100 (1450)	4	S-GEV 4 LLM	1.8	M 8 x 1	19	13.5	9.5	8	12	12	10	WAL038302	WAL623050
		6	S-GEV 6 LLM	1.9	M 10 x 1	19.5	13.5	8	8	14	14	12	WAL038304	WAL623052
		8	S-GEV 8 LLM	2.3	M 10 x 1	20.5	14.5	9	8	14	14	14	WAL038305	WAL371486
L	400 (5801)	6	P-GEV 6 LM	2.5	M 10 x 1	23	15.5	8.5	8	14	14	14	WAL373087	WAL620023
		6	P-GEV 6 L/M 12 x 1.5	4.0	M 12 x 1.5	24.5	17	10	12	17	17	14	WAL373088	WAL623054
		8	P-GEV 8 LM	4.0	M 12 x 1.5	25	17	10	12	17	17	17	WAL373089	WAL620024
		8	P-GEV 8 L/M 18 x 1.5	6.8	M 18 x 1.5	26	18.5	11.5	12	23	24	17	WAL373090	WAL623056
		10	P-GEV 10 LM	4.7	M 14 x 1.5	26	18	11	12	19	19	19	WAL373091	WAL620025
		10	P-GEV 10 L/M 16 x 1.5	6.2	M 16 x 1.5	27	19.5	12.5	12	21	22	19	WAL602652	WAL623057
		10	P-GEV 10 L/M 18 x 1.5	7.6	M 18 x 1.5	27	19.5	12.5	12	23	24	19	WAL373092	WAL623059
		10	P-GEV 10 L/M 22 x 1.5	8.3	M 22 x 1.5	27.5	20	13	14	27	27	19	WAL373093	WAL623060
		12	P-GEV 12 LM	6.3	M 16 x 1.5	27	19.5	12.5	12	21	22	22	WAL373094	WAL620026
		12	P-GEV 12 L/M 18 x 1.5	7.8	M 18 x 1.5	27	19.5	12.5	12	23	24	22	WAL373095	WAL623062
		12	P-GEV 12 L/M 22 x 1.5	9.5	M 22 x 1.5	27.5	20	13	14	27	27	22	WAL373096	WAL623063
		15	P-GEV 15 LM	9.5	M 18 x 1.5	29	20.5	13.5	12	23	24	27	WAL373097	WAL620027
	250 (3626)	15	P-GEV 15 L/M 22 x 1.5	11.5	M 22 x 1.5	29	21	14	14	27	27	27	WAL373098	WAL620816
		18	P-GEV 18 L/M 18 x 1.5	12.2	M 18 x 1.5	30	21.5	14	12	23	27	32	WAL373099	WAL623065
		18	P-GEV 18 LM	12.9	M 22 x 1.5	31	22	14.5	14	27	27	32	WAL373100	WAL620028
		22	P-GEV 22 LM	17.6	M 26 x 1.5	33	24	16.5	16	31	32	36	WAL373101	WAL620424
		28	P-GEV 28 LM	24.7	M 33 x 2	34	25	17.5	18	39	41	41	WAL373102	WAL620029
		35	P-GEV 35 LM	40.7	M 42 x 2	39	28	17.5	20	49	50	50	WAL373103	WAL620452
		42	P-GEV 42 LM	45.6	M 48 x 2	42	30	19	22	55	55	60	WAL373104	WAL620995
		6	P-GEV 6 SM	4.5	M 12 x 1.5	28	20	13	12	17	17	17	WAL373105	WAL620030
S	630 (9137)	8	P-GEV 8 SM	5.5	M 14 x 1.5	30	22	15	12	19	19	19	WAL373106	WAL620031
		10	P-GEV 10 SM	8.2	M 16 x 1.5	31	22.5	15	12	21	22	22	WAL373107	WAL620032
		12	P-GEV 12 SM	10.5	M 18 x 1.5	33	24.5	17	12	23	24	24	WAL373108	WAL620033
		14	P-GEV 14 SM	14.8	M 20 x 1.5	37	27	19	14	25	27	27	WAL373109	WAL621510
	400 (5801)	16	P-GEV 16 SM	15.4	M 22 x 1.5	37	27	18.5	14	27	27	30	WAL373110	WAL620661
		20	P-GEV 20 SM	25.3	M 27 x 2	42	31	20.5	16	32	32	36	WAL373111	WAL620503
	250 (3626)	25	P-GEV 25 SM	46.5	M 33 x 2	47	35	23	18	39	41	46	WAL373112	WAL620887
		30	P-GEV 30 SM	64.4	M 42 x 2	50	37	23.5	20	49	50	50	WAL373113	WAL621150
		38	P-GEV 38 SM	88.9	M 48 x 2	57	42	26	22	55	55	60	WAL373114	WAL620662

Caution: The pressure specifications refer to the steel version. For the stainless steel version (1.4571), please refer to the pressure specifications on page B5.
 *Complete stainless steel fittings (1.4571) with silver-plated nut (AG/AGP), see price list
 L₂= approximate dimension if the union nut is tightened

Special parts are available on request.

GES ... M

GES ... M-1.4571



E

System nuts for supplementing the stud
(for technical data, see part D of this catalog)

Series	PN bar (psi)	Tube outer diameter	Model	kg/ 100 pc.	M	Stud GES ... Art. no.	Stud Stainless steel GES ... -1.4571* Art. no.	System nuts for supplementing the stud (for technical data, see part D of this catalog)		
								WALRING W-R ... VI Art. no.	WALFORM WF-M ... VI Art. no.	WALFORM stainless steel WF-M ... VI-1.4571* Art. no.
LL	100 (1450)	4	GES 4 LLM	0.9	M 8 x 1	WAL037589	WAL623051			
		6	GES 6 LLM	1.1	M 10 x 1	WAL037591	WAL623053			
		8	GES 8 LLM	1.2	M 10 x 1	WAL037592	WAL371485			
L	400 (5801)	6	GES 6 LM	1.4	M 10 x 1	WAL037593	WAL025498	WAL624607	WAL625940	WAL625980
		6	GES 6 L/M 12 x 1.5	2.6	M 12 x 1.5	WAL037594	WAL623055	WAL624607	WAL625940	WAL625980
		8	GES 8 LM	2.3	M 12 x 1.5	WAL037595	WAL025499	WAL624608	WAL625941	WAL625981
		8	GES 8 L/M 18 x 1.5	5.1	M 18 x 1.5	WAL024882	WAL372571	WAL624608	WAL625941	WAL625981
		10	GES 10 LM	2.9	M 14 x 1.5	WAL037596	WAL025500	WAL624609	WAL625942	WAL625982
		10	GES 10 L/M 16 x 1.5	4.0	M 16 x 1.5	WAL063190	WAL623058	WAL624609	WAL625942	WAL625982
		10	GES 10 L/M 18 x 1.5	5.0	M 18 x 1.5	WAL025287	WAL372883	WAL624609	WAL625942	WAL625982
		10	GES 10 L/M 22 x 1.5	7.6	M 22 x 1.5	WAL028692	WAL623061	WAL624609	WAL625942	WAL625982
		12	GES 12 LM	4.0	M 16 x 1.5	WAL037597	WAL025501	WAL624610	WAL625943	WAL625983
		12	GES 12 L/M 18 x 1.5	4.7	M 18 x 1.5	WAL037598	WAL602783	WAL624610	WAL625943	WAL625983
		12	GES 12 L/M 22 x 1.5	7.3	M 22 x 1.5	WAL028695	WAL623064	WAL624610	WAL625943	WAL625983
		15	GES 15 LM	5.2	M 18 x 1.5	WAL037599	WAL025502	WAL624611	WAL625944	WAL625984
		15	GES 15 L/M 22 x 1.5	7.4	M 22 x 1.5	WAL028117	WAL604968	WAL624611	WAL625944	WAL625984
		18	GES 18 L/M 18 x 1.5	6.4	M 18 x 1.5	WAL029643	WAL623066	WAL624612	WAL625945	WAL625985
		18	GES 18 LM	7.6	M 22 x 1.5	WAL037600	WAL025503	WAL624612	WAL625945	WAL625985
	250 (3626)	22	GES 22 LM	10.1	M 26 x 1.5	WAL037601	WAL604218	WAL624613	WAL625946	WAL625986
		28	GES 28 LM	16.7	M 33 x 2	WAL037602	WAL025505	WAL624614	WAL625947	WAL625987
		35	GES 35 LM	28.2	M 42 x 2	WAL037603	WAL025506	WAL624615	WAL625948	WAL625988
		42	GES 42 LM	35.8	M 48 x 2	WAL037604	WAL617435	WAL624616	WAL625949	WAL625989
S	630 (9137)	6	GES 6 SM	3.0	M 12 x 1.5	WAL037605	WAL028656	WAL624617	WAL625950	WAL625990
		8	GES 8 SM	4.3	M 14 x 1.5	WAL037606	WAL025508	WAL624618	WAL625951	WAL625991
		10	GES 10 SM	5.5	M 16 x 1.5	WAL037607	WAL025509	WAL624619	WAL625952	WAL625992
		12	GES 12 SM	7.2	M 18 x 1.5	WAL037608	WAL025510	WAL624620	WAL625953	WAL625993
		14	GES 14 SM	9.4	M 20 x 1.5	WAL037609	WAL025511			
		16	GES 16 SM	9.8	M 22 x 1.5	WAL037610	WAL025512	WAL624621	WAL625954	WAL625994
	400 (5801)	20	GES 20 SM	15.3	M 27 x 2	WAL037611	WAL025513	WAL624622	WAL625955	WAL625995
		25	GES 25 SM	26.9	M 33 x 2	WAL037612	WAL025514	WAL624623	WAL625956	WAL625996
	250 (3626)	30	GES 30 SM	42.8	M 42 x 2	WAL037613	WAL617436	WAL624624	WAL625957	WAL625997
		38	GES 38 SM	57.5	M 48 x 2	WAL037614	WAL025516	WAL624625	WAL625958	WAL625998

Caution: The pressure specifications refer to the steel version. For the stainless steel version (1.4571), please refer to the pressure specifications on page B5.

Special parts are available on request.