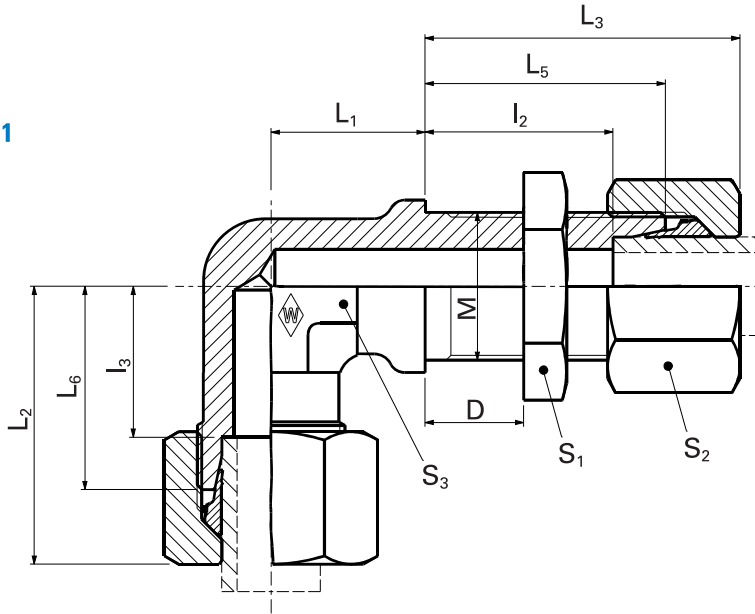


# Bulkhead elbow fittings

P-WSV ...

P-WSV ... -1.4571

E



WALPRO  
P-WSV ...  
WALPRO  
stainless  
steel  
P-WSV ...-  
1.4571\*

Series	PN bar (psi)	Tube outer diameter	Model	M	D min.	D max.	kg/100 pc.	L <sub>1</sub>	L <sub>2</sub>	L <sub>3</sub>	L <sub>5</sub>	L <sub>6</sub>	I <sub>2</sub>	I <sub>3</sub>	d	S <sub>1</sub>	S <sub>2</sub>	S <sub>3</sub>	Art. no.	Art. no.
L	500 (7252)	6	P-WSV 6 L m. 6kt M	M 12 x 1.5	4	16	7.5	14	27	42	34	19	27	12	17	17	14	12	WAL373471	WAL620245
		8	P-WSV 8 L m. 6kt M	M 14 x 1.5	4	16	9.9	17	29	42	34	21	27	14	19	19	17	12	WAL373472	WAL620480
		10	P-WSV 10 L m. 6kt M	M 16 x 1.5	4	16	12.0	18	30	43	35	22	28	15	22	22	19	14	WAL373473	WAL620502
	400 (5801)	12	P-WSV 12 L m. 6kt M	M 18 x 1.5	4	16	15.0	20	32	44	36	24	29	17	24	24	22	17	WAL373474	WAL620246
		15	P-WSV 15 L m. 6kt M	M 22 x 1.5	4	16	25.0	23	36	46	38	28	31	21	27	30	27	19	WAL373475	WAL620338
		18	P-WSV 18 L m. 6kt M	M 26 x 1.5	4	16	35.5	24	40	49	40	31	32.5	23.5	32	36	32	24	WAL373476	WAL620500
	250 (3626)	22	P-WSV 22 L m. 6kt M	M 30 x 2	5	16	46.5	30	44	51	42	35	34.5	27.5	36	41	36	27	WAL373477	WAL620520
		28	P-WSV 28 L m. 6kt M	M 36 x 2	5	16	64.0	34	47	52	43	38	35.5	30.5	42	46	41	36	WAL373478	WAL620552
		35	P-WSV 35 L m. 6kt M	M 45 x 2	5	16	99.4	39	56	58	47	45	36.5	34.5	50	55	50	41	WAL373479	WAL620672
		42	P-WSV 42 L m. 6kt M	M 52 x 2	5	16	149.0	43	63	59	47	51	36	40	60	65	60	50	WAL373480	WAL620673
S	800 (11603)	6	P-WSV 6 S m. 6kt M	M 14 x 1.5	4	16	10.5	17	31	44	36	23	29	16	19	19	17	12	WAL373481	WAL620540
		8	P-WSV 8 S m. 6kt M	M 16 x 1.5	4	16	14.0	18	32	44	36	24	29	17	22	22	19	14	WAL373482	WAL620541
		10	P-WSV 10 S m. 6kt M	M 18 x 1.5	4	16	19.0	20	34	46	37	25	29.5	17.5	24	24	22	17	WAL373483	WAL620463
	630 (9137)	12	P-WSV 12 S m. 6kt M	M 20 x 1.5	4	16	22.5	21	38	47	38	29	30.5	21.5	27	27	24	17	WAL373484	WAL620334
		14	P-WSV 14 S m. 6kt M	M 22 x 1.5	4	16	30.0	23	40	50	40	30	32	22	27	30	27	19	WAL373485	WAL620674
		16	P-WSV 16 S m. 6kt M	M 24 x 1.5	4	16	36.5	24	43	50	40	33	31.5	24.5	30	32	30	24	WAL373486	WAL620264
	400 (5801)	20	P-WSV 20 S m. 6kt M	M 30 x 2	5	16	58.0	30	48	55	44	37	33.5	26.5	36	41	36	27	WAL373487	WAL620223
		25	P-WSV 25 S m. 6kt M	M 36 x 2	5	16	100.0	34	54	59	47	42	35	30	42	46	46	36	WAL373488	WAL620247
		30	P-WSV 30 S m. 6kt M	M 42 x 2	5	16	130.0	39	62	64	51	49	37.5	35.5	50	50	50	41	WAL373489	WAL620675
		38	P-WSV 38 S m. 6kt M	M 52 x 2	5	16	197.0	43	72	68	53	57	37	41	60	65	60	50	WAL373490	WAL620391

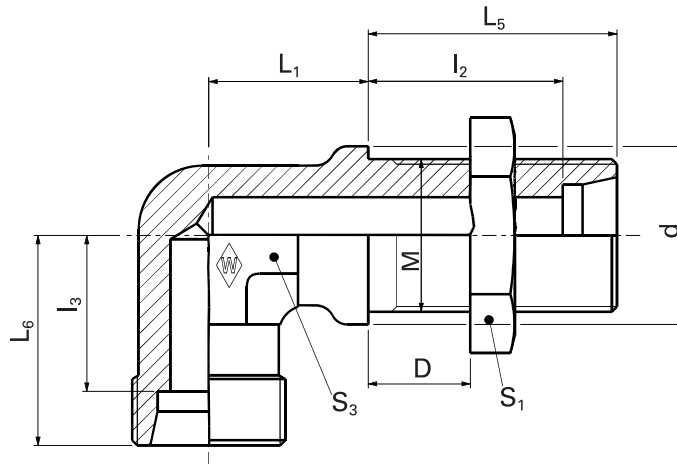
**△ Caution:** The pressure specifications refer to the steel version. For the stainless steel version (1.4571), please refer to the pressure specifications on page B5.

\*Complete stainless steel fittings (1.4571) with silver-plated nut (AG/AGP), see price list

L<sub>2</sub>= approximate dimension if the union nut is tightened

Special parts are available on request.

**WSS ...**  
**WSS ... -1.4571**



**E**

System nuts for supplementing the stud  
 (for technical data, see part D of this catalog)

Series	PN bar (psi)	Tube outer diameter	Model	M	D min.	D max.	kg/ 100 pc.	Stud WSS ... Art. no.	Stainless steel stud WSS ... -1.4571* Art. no.	WALRING W-R ... VI Art. no.	WALFORM WF-M ... VI Art. no.	WALFORM stainless steel WF-M ... VI-1.4571* Art. no.
L	500 (7252)	6	WSS 6 L m. 6kt M	M 12 x 1.5	4	16	5.0	WAL063274	WAL617488	WAL624607	WAL625940	WAL625980
		8	WSS 8 L m. 6kt M	M 14 x 1.5	4	16	6.5	WAL024146	WAL617489	WAL624608	WAL625941	WAL625981
		10	WSS 10 L m. 6kt M	M 16 x 1.5	4	16	8.0	WAL024127	WAL608422	WAL624609	WAL625942	WAL625982
	400 (5801)	12	WSS 12 L m. 6kt M	M 18 x 1.5	4	16	10.0	WAL063773	WAL615355	WAL624610	WAL625943	WAL625983
		15	WSS 15 L m. 6kt M	M 22 x 1.5	4	16	17.0	WAL063275	WAL617490	WAL624611	WAL625944	WAL625984
		18	WSS 18 L m. 6kt M	M 26 x 1.5	4	16	24.0	WAL063774	WAL617491	WAL624612	WAL625945	WAL625985
	250 (3626)	22	WSS 22 L m. 6kt M	M 30 x 2	5	16	64.2	WAL063775	WAL612437	WAL624613	WAL625946	WAL625986
		28	WSS 28 L m. 6kt M	M 36 x 2	5	16	44.5	WAL063776	WAL615221	WAL624614	WAL625947	WAL625987
		35	WSS 35 L m. 6kt M	M 45 x 2	5	16	68.8	WAL063777	WAL617492	WAL624615	WAL625948	WAL625988
		42	WSS 42 L m. 6kt M	M 52 x 2	5	16	196.7	WAL063778	WAL617493	WAL624616	WAL625949	WAL625989
S	800 (11603)	6	WSS 6 S m. 6kt M	M 14 x 1.5	4	16	7.5	WAL063779	WAL617494	WAL624617	WAL625950	WAL625990
		8	WSS 8 S m. 6kt M	M 16 x 1.5	4	16	10.0	WAL063780	WAL617495	WAL624618	WAL625951	WAL625991
		10	WSS 10 S m. 6kt M	M 18 x 1.5	4	16	12.2	WAL063781	WAL617496	WAL624619	WAL625952	WAL625992
	630 (9137)	12	WSS 12 S m. 6kt M	M 20 x 1.5	4	16	16.0	WAL063782	WAL617497	WAL624620	WAL625953	WAL625993
		14	WSS 14 S m. 6kt M	M 22 x 1.5	4	16	20.0	WAL063783	WAL617498			
		16	WSS 16 S m. 6kt M	M 24 x 1.5	4	16	23.0	WAL063784	WAL601079	WAL624621	WAL625954	WAL625994
	400 (5801)	20	WSS 20 S m. 6kt M	M 30 x 2	5	16	38.5	WAL063785	WAL612438	WAL624622	WAL625955	WAL625995
		25	WSS 25 S m. 6kt M	M 36 x 2	5	16	62.0	WAL063786	WAL615212	WAL624623	WAL625956	WAL625996
		30	WSS 30 S m. 6kt M	M 42 x 2	5	16	88.5	WAL063244	WAL615651	WAL624624	WAL625957	WAL625997
		38	WSS 38 S m. 6kt M	M 52 x 2	5	16	129.9	WAL063787	WAL617499	WAL624625	WAL625958	WAL625998

**⚠ Caution:** The pressure specifications refer to the steel version. For the stainless steel version (1.4571), please refer to the pressure specifications on page B5.

Special parts are available on request.