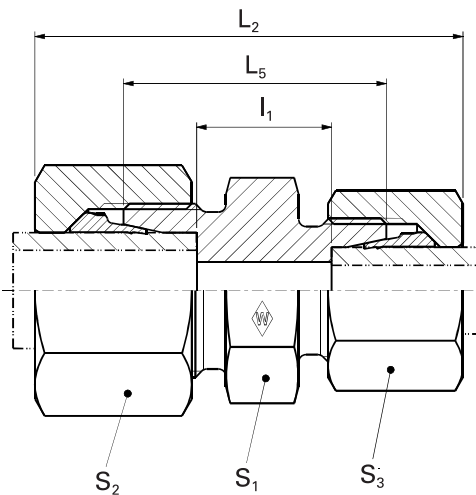


Straight reducer fittings

P-GV ... / ...

P-GV ... / ... -1.4571



E

WALPRO
P-GV ... / ...
WALPRO
stainless steel
P-GV ... / ...
-1.4571*

Series	PN bar (psi)	Tube outer diameter 1	Tube outer diameter 2	Model	kg/ 100 pc.	L ₂	L ₅	l ₁	S ₁	S ₂	S ₃	Art. no.	Art. no.
LL	100 (1450)	6	4	S-GV 6/4 LL	1.8	32.5	20	10.5	11	12	10	WAL060065	WAL623072
		8	4	S-GV 8/4 LL	2.1	34	22	12.5	12	14	10	WAL024214	WAL623074
L	500 (7252)	8	6	P-GV 8/6 L	4.4	40	25	11	14	17	14	WAL374530	WAL620872
		10	6	P-GV 10/6 L	5.4	41	26	12	17	19	14	WAL374531	WAL620857
		10	8	P-GV 10/8 L	5.6	41	26	12	17	19	17	WAL602920	WAL620156
		12	6	P-GV 12/6 L	6.4	42	27	13	19	22	14	WAL602654	WAL621005
		12	8	P-GV 12/8 L	7.2	42	27	13	19	22	17	WAL374532	WAL620190
	400 (5801)	12	10	P-GV 12/10 L	8.0	43	28	14	19	22	19	WAL374533	WAL620548
		15	10	P-GV 15/10 L	11.4	44.5	29	15	24	27	19	WAL374534	WAL620841
		15	12	P-GV 15/12 L	11.8	44.5	29	15	24	27	22	WAL374535	WAL620616
		18	10	P-GV 18/10 L	14.1	46	30	15.5	27	32	19	WAL602655	WAL620575
		18	12	P-GV 18/12 L	15.7	46	30	15.5	27	32	22	WAL374536	WAL620574
250 (3626)	18	15	P-GV 18/15 L	17.5	47.5	31	16.5	27	32	27	WAL374537	WAL620615	
	22	15	P-GV 22/15 L	21.4	49.5	33	18.5	32	36	27	WAL374538	WAL621009	
	22	18	P-GV 22/18 L	23.8	50	33	18.21	32	36	32	WAL374762	WAL620833	
S	630 (9137)	28	22	P-GV 28/22 L	32.6	54	36	21	41	41	36	WAL604368	WAL620900
		16	12	P-GV 16/12 S	22.3	54	36	20	27	30	24	WAL374539	WAL620573
	420 (6091)	20	16	P-GV 20/16 S	30.0	62.5	42	23	32	36	30	WAL374540	WAL621024
		25	16	P-GV 25/16 S	52.6	68	46	25.5	41	46	30	WAL604471	WAL621025
		25	20	P-GV 25/20 S	55.2	71	48	25.5	41	46	36	WAL374541	WAL621026

⚠ Caution: The pressure specifications refer to the steel version. For the stainless steel version (1.4571), please refer to the pressure specifications on page B5.

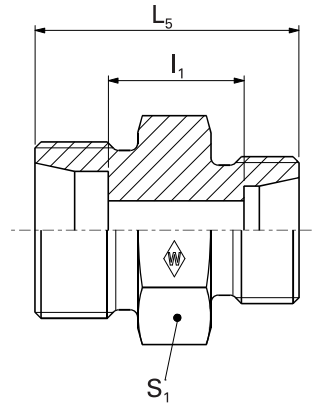
*Complete stainless steel fittings (1.4571) with silver-plated nut (AG/AGP), see price list

L₂= approximate dimension if the union nut is tightened

Special parts are available on request.

GS ... / ...

GS ... / ... -1.4571



E

System nuts for supplementing the stud
(for technical data, see part D of this catalog)

Series	PN bar (psi)	Tube outer diameter 1	Tube outer diameter 2	Model	kg/ 100 pc.	Art. no.	Stud	System nuts for supplementing the stud		
							GS ... / ...	Stud Stainless steel GS ... / ... -1.4571*	WALRING W-R ... VI	WALFORM WF-M ... VI
LL	100 (1450)	6	4	GS 6/ 4 LL	0.7	WAL060066	WAL623073			
		8	4	GS 8/ 4 LL	0.8	WAL025120	WAL623075			
L	500 (7252)	8	6	GS 8/ 6 L	1.6	WAL029475	WAL061625	WAL624608	WAL625941	WAL625981
		10	6	GS 10/ 6 L	2.0	WAL029476	WAL617445	WAL624609	WAL625942	WAL625982
		10	8	GS 10/ 8 L	2.1	WAL029477	WAL061627	WAL624609	WAL625942	WAL625982
		12	6	GS 12/ 6 L	2.3	WAL063441	WAL066615	WAL624610	WAL625943	WAL625983
		12	8	GS 12/ 8 L	2.3	WAL029478	WAL066613	WAL624610	WAL625943	WAL625983
		12	10	GS 12/ 10 L	2.5	WAL029479	WAL605070	WAL624610	WAL625943	WAL625983
	400 (5801)	15	10	GS 15/ 10 L	4.4	WAL060223	WAL617448	WAL624611	WAL625944	WAL625984
		15	12	GS 15/ 12 L	4.2	WAL029480	WAL604558	WAL624611	WAL625944	WAL625984
		18	10	GS 18/ 10 L	6.0	WAL024917	WAL605347	WAL624612	WAL625945	WAL625985
		18	12	GS 18/ 12 L	5.9	WAL029663	WAL605346	WAL624612	WAL625945	WAL625985
		18	15	GS 18/ 15 L	6.1	WAL029482	WAL605919	WAL624612	WAL625945	WAL625985
		22	15	GS 22/ 15 L	7.9	WAL024355	WAL617451	WAL624613	WAL625946	WAL625986
250 (3626)	22	18	GS 22/ 18 L	8.3	WAL061992	WAL617452	WAL624613	WAL625946	WAL625986	
	28	22	GS 28/ 22 L	13.0	WAL024889	WAL615418	WAL624614	WAL625947	WAL625987	
S	630 (9137)	16	12	GS 16/ 12 S	8.2	WAL029481	WAL371138	WAL624621	WAL625954	WAL625994
		20	16	GS 20/ 16 S	13.1	WAL025197	WAL612801	WAL624622	WAL625955	WAL625995
	420 (6091)	25	16	GS 25/ 16 S	22.3	WAL060853	WAL615211	WAL624623	WAL625956	WAL625996
		25	20	GS 25/ 20 S	23.4	WAL063230	WAL617469	WAL624623	WAL625956	WAL625996

⚠ Caution: The pressure specifications refer to the steel version. For the stainless steel version (1.4571), please refer to the pressure specifications on page B5.

Special parts are available on request.