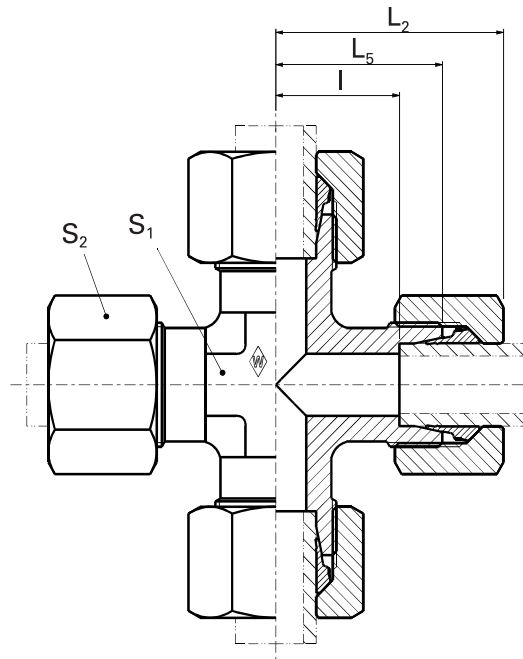


Cross fittings

P-KV ...

P-KV ... -1.4571



E

Series	PN bar (psi)	Tube outer diameter	Model	kg/ 100 pc.	L ₂	L ₅	I ₁	S ₁	S ₂	WALPRO	WALPRO stainless steel
										P-KV ...	P-KV ...-1.4571*
										Art. no.	Art. no.
LL	100 (1450)	4	S-KV 4 LL	3.0	21	15	11	9	10	WAL038624	WAL623076
		6	S-KV 6 LL	4.0	21	15	9.5	9	12	WAL038626	WAL623078
		8	S-KV 8 LL	6.0	23	17	11.5	12	14	WAL038627	WAL623080
L	500 (7252)	6	P-KV 6 L	7.7	27	19	12	12	14	WAL373431	WAL620368
		8	P-KV 8 L	10.9	29	21	14	12	17	WAL373432	WAL621030
		10	P-KV 10 L	15.5	30	22	15	14	19	WAL373433	WAL620446
	400 (5801)	12	P-KV 12 L	19.2	32	24	17	17	22	WAL373434	WAL620442
		15	P-KV 15 L	31.1	36	28	21	19	27	WAL373435	WAL620355
		18	P-KV 18 L	48.3	40	31	23.5	24	32	WAL373436	WAL620670
		22	P-KV 22 L	72.4	44	35	27.5	27	36	WAL373437	WAL620529
250 (5801)	28	P-KV 28 L	101.1	47	38	30.5	36	41	WAL373438	WAL621031	
	35	P-KV 35 L	122.8	56	45	34.5	41	50	WAL373439	WAL621032	
S	800 (11603)	42	P-KV 42 L	175.6	63	51	40	50	60	WAL373440	WAL620671
		6	P-KV 6 S	12.3	31	23	16	12	17	WAL373441	WAL621033
		8	P-KV 8 S	14.8	32	24	17	14	19	WAL373442	WAL620649
	630 (9137)	10	P-KV 10 S	23.0	34	25	17.5	17	22	WAL373443	WAL620498
		12	P-KV 12 S	28.2	38	29	21.5	17	24	WAL373444	WAL620522
		14	P-KV 14 S	35.4	40	30	22	19	27	WAL373445	WAL621534
		16	P-KV 16 S	45.1	43	33	24.5	24	30	WAL373446	WAL621034
	420 (6091)	20	P-KV 20 S	70.4	48	37	26.5	27	36	WAL373447	WAL620906
		25	P-KV 25 S	125.7	54	42	30	36	46	WAL373448	WAL620515
		30	P-KV 30 S	150.3	62	49	35.5	41	50	WAL373449	WAL621035
400 (5801)	38	P-KV 38 S	205.1	72	57	41	50	60	WAL373450	WAL621036	

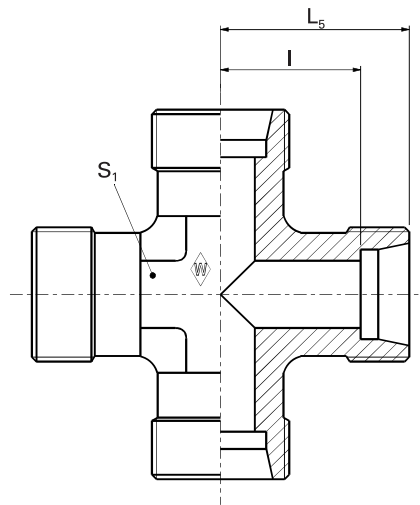
⚠ Caution: The pressure specifications refer to the steel version. For the stainless steel version (1.4571), please refer to the pressure specifications on page B5.

*Complete stainless steel fittings (1.4571) with silver-plated nut (AG/AGP), see price list

L₂= approximate dimension if the union nut is tightened

Special parts are available on request.

KS ...
KS ... -1.4571



E

System nuts for supplementing the stud
(for technical data, see part D of this catalog)

Series	PN bar (psi)	Tube outer diameter	Model	kg/ 100 pc.	Stud KS ... Art. no.	Stud Stainless steel KS ... -1.4571*	WALRING W-R ... VI Art. no.	WALFORM WF-M ... VI Art. no.	WALFORM stainless steel WF-M ... VI-1.4571*
						Art. no.			Art. no.
LL	100 (1450)	4	KS 4 LL	1.5	WAL037911	WAL623077			
		6	KS 6 LL	1.5	WAL037913	WAL623079			
		8	KS 8 LL	2.6	WAL037914	WAL623081			
L	500 (7252)	6	KS 6 L	3.5	WAL037915	WAL372737	WAL624607	WAL625940	WAL625980
		8	KS 8 L	4.1	WAL037916	WAL372105	WAL624608	WAL625941	WAL625981
		10	KS 10 L	4.6	WAL037917	WAL370719	WAL624609	WAL625942	WAL625982
	400 (5801)	12	KS 12 L	7.3	WAL037918	WAL604343	WAL624610	WAL625943	WAL625983
		15	KS 15 L	12.5	WAL037919	WAL372319	WAL624611	WAL625944	WAL625984
		18	KS 18 L	18.2	WAL037920	WAL374733	WAL624612	WAL625945	WAL625985
		22	KS 22 L	23.5	WAL037921	WAL371815	WAL624613	WAL625946	WAL625986
	250 (5801)	28	KS 28 L	64.0	WAL037922	WAL617474	WAL624614	WAL625947	WAL625987
		35	KS 35 L	64.0	WAL037923	WAL617475	WAL624615	WAL625948	WAL625988
		42	KS 42 L	83.2	WAL037924	WAL605168	WAL624616	WAL625949	WAL625989
6		KS 6 S	6.1	WAL037925	WAL617476	WAL624617	WAL625950	WAL625990	
S	800 (11603)	8	KS 8 S	8.1	WAL037926	WAL617477	WAL624618	WAL625951	WAL625991
		10	KS 10 S	10.4	WAL037927	WAL604780	WAL624619	WAL625952	WAL625992
		12	KS 12 S	13.7	WAL037928	WAL604969	WAL624620	WAL625953	WAL625993
	630 (9137)	14	KS 14 S	16.5	WAL037929	WAL617478			
		16	KS 16 S	22.4	WAL037930	WAL371676	WAL624621	WAL625954	WAL625994
		20	KS 20 S	29.0	WAL037931	WAL617479	WAL624622	WAL625955	WAL625995
	420 (6091)	25	KS 25 S	43.5	WAL037932	WAL604892	WAL624623	WAL625956	WAL625996
		30	KS 30 S	58.5	WAL037933	WAL371178	WAL624624	WAL625957	WAL625997
	400 (5801)	38	KS 38 S	73.5	WAL037934	WAL604807	WAL624625	WAL625958	WAL625998

⚠ Caution: The pressure specifications refer to the steel version. For the stainless steel version (1.4571), please refer to the pressure specifications on page B5.

Special parts are available on request.