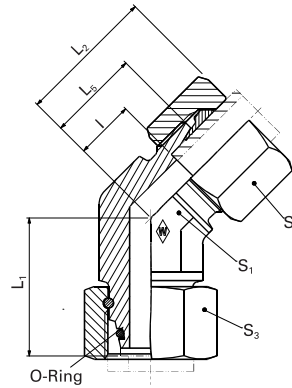


# Adjustable elbow fittings

## P-EWVD 45 ...

- with taper and O-ring made from NBR\* (e.g. Perbunan)



F

WALPRO  
P-EWVD 45 ...

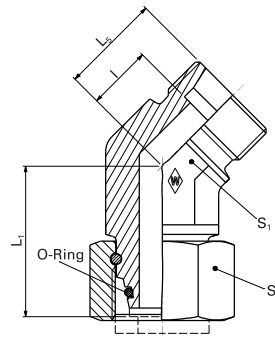
Series	PN bar (psi)	Tube outer diameter	Model	L <sub>1</sub>	L <sub>5</sub>	I	S <sub>1</sub>	S <sub>3</sub>	*O-ring	Art. no.
L	500 (7252)	6	<b>P-EWVD 45 6 L</b>	26.0	16.0	9.0	14	17	4.5 x 1.5	<b>WAL625819</b>
		8	<b>P-EWVD 45 8 L</b>	27.5	19.0	12.0	14	17	6 x 1.5	<b>WAL625820</b>
		10	<b>P-EWVD 45 10 L</b>	29.0	19.0	12.0	19	19	8.5 x 1.5	<b>WAL625821</b>
	400 (5801)	12	<b>P-EWVD 45 12 L</b>	29.5	21.0	14.0	19	22	10 x 1.5	<b>WAL625822</b>
		15	<b>P-EWVD 45 15 L</b>	32.5	24.0	17.0	22	27	12 x 2	<b>WAL625823</b>
		18	<b>P-EWVD 45 18 L</b>	35.5	24.0	16.5	27	32	15 x 2	<b>WAL625824</b>
		22	<b>P-EWVD 45 22 L</b>	38.5	26.5	18.5	30	36	20 x 2	<b>WAL625825</b>
	250 (3626)	28	<b>P-EWVD 45 28 L</b>	41.5	30.5	23.0	36	46	26 x 2	<b>WAL625826</b>
		35	<b>P-EWVD 45 35 L</b>	51.0	37.0	26.5	50	50	32 x 2.5	<b>WAL625827</b>
		42	<b>P-EWVD 45 42 L</b>	56.0	37.0	26.0	50	60	38 x 2.5	<b>WAL625828</b>
S	800 (11603)	6	<b>P-EWVD 45 6 S</b>	27.0	16.0	9.0	14	17	4.5 x 1.5	<b>WAL625829</b>
		8	<b>P-EWVD 45 8 S</b>	27.5	19.0	12.0	19	19	6 x 1.5	<b>WAL625830</b>
		10	<b>P-EWVD 45 10 S</b>	30.0	21.0	13.5	19	22	8.5 x 1.5	<b>WAL625831</b>
	630 (9137)	12	<b>P-EWVD 45 12 S</b>	31.0	24.0	16.5	22	24	10 x 1.5	<b>WAL625832</b>
		16	<b>P-EWVD 45 16 S</b>	36.5	24.0	15.5	27	30	14 x 2	<b>WAL625833</b>
	420 (6091)	20	<b>P-EWVD 45 20 S</b>	44.5	26.5	16.0	30	36	17.3 x 2.4	<b>WAL625834</b>
		25	<b>P-EWVD 45 25 S</b>	50.5	30.5	18.5	36	46	22.3 x 2.4	<b>WAL625835</b>
	400 (5801)	30	<b>P-EWVD 45 30 S</b>	55.0	37.0	23.5	50	50	27.3 x 2.4	<b>WAL625836</b>
		38	<b>P-EWVD 45 38 S</b>	63.0	37.0	21.0	50	60	35 x 2.5	<b>WAL625837</b>

L<sub>2</sub> = approximate dimension if the union nut is tightened

\*For FPM (e.g. Viton) see price list / available on request

Special parts are available on request.

## EWSD 45 ...



F

System nuts for supplementing the stud  
(for technical data, see part D of this catalog)

Series	PN bar (psi)	Tube outer diameter	Model	Art. no.	Stud	System nuts for supplementing the stud (for technical data, see part D of this catalog)	
					EWSD 45 ...	WALRING W-R ... VI	WALFORM WF-M ... VI
						Art. no.	Art. no.
L	500 (7252)	6	EWSD 45 6 L	WAL625761	WAL624607	WAL625940	
		8	EWSD 45 8 L	WAL625762	WAL624608	WAL625941	
		10	EWSD 45 10 L	WAL625763	WAL624609	WAL625942	
	400 (5801)	12	EWSD 45 12 L	WAL625764	WAL624610	WAL625943	
		15	EWSD 45 15 L	WAL625765	WAL624611	WAL625944	
		18	EWSD 45 18 L	WAL625766	WAL624612	WAL625945	
		22	EWSD 45 22 L	WAL625767	WAL624613	WAL625946	
	250 (3626)	28	EWSD 45 28 L	WAL625768	WAL624614	WAL625947	
		35	EWSD 45 35 L	WAL625769	WAL624615	WAL625948	
		42	EWSD 45 42 L	WAL625770	WAL624616	WAL625949	
S		800 (11603)	6	EWSD 45 6 S	WAL625771	WAL624617	WAL625950
	8		EWSD 45 8 S	WAL625772	WAL624618	WAL625951	
	10		EWSD 45 10 S	WAL625773	WAL624619	WAL625952	
	630 (9137)	12	EWSD 45 12 S	WAL625774	WAL624620	WAL625953	
		16	EWSD 45 16 S	WAL625775	WAL624621	WAL625954	
	420 (6091)	20	EWSD 45 20 S	WAL625776	WAL624622	WAL625955	
		25	EWSD 45 25 S	WAL625777	WAL624623	WAL625956	
	400 (5801)	30	EWSD 45 30 S	WAL625778	WAL624624	WAL625957	
		38	EWSD 45 38 S	WAL625779	WAL624625	WAL625958	

Special parts are available on request.